

RADIUS server

Y36SPS

David Beneš

Co je to RADIUS server

- RFC 2865, 2866
- Implementace RADIUS protokolu, určeného k:
 - Autorizaci
 - Autentizaci
 - Účtování
- Nad UDP, porty 1812 a 1813
- Komunikuje s NAS, ne přímo s připojovaným počítačem

Schéma komunikace

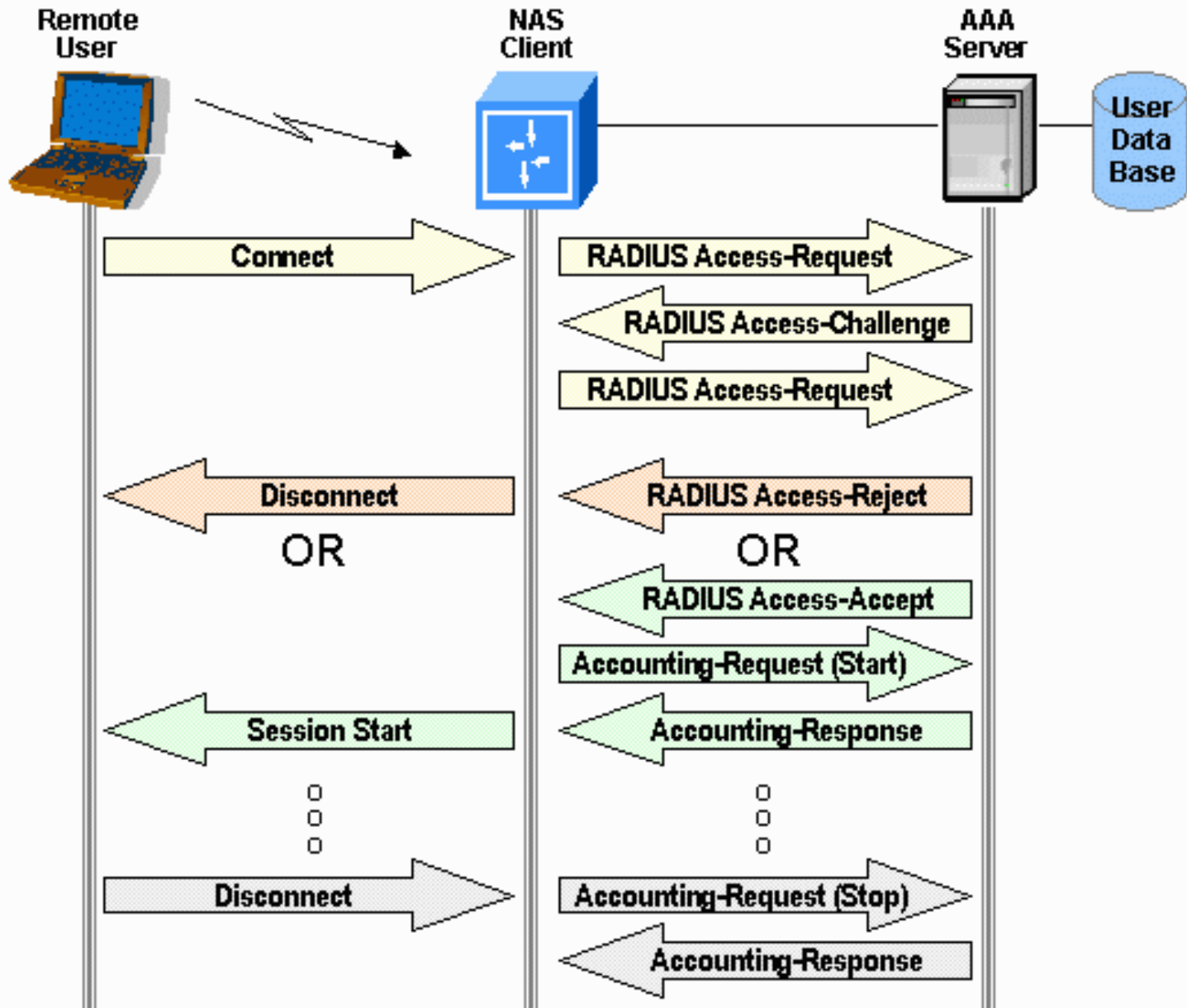
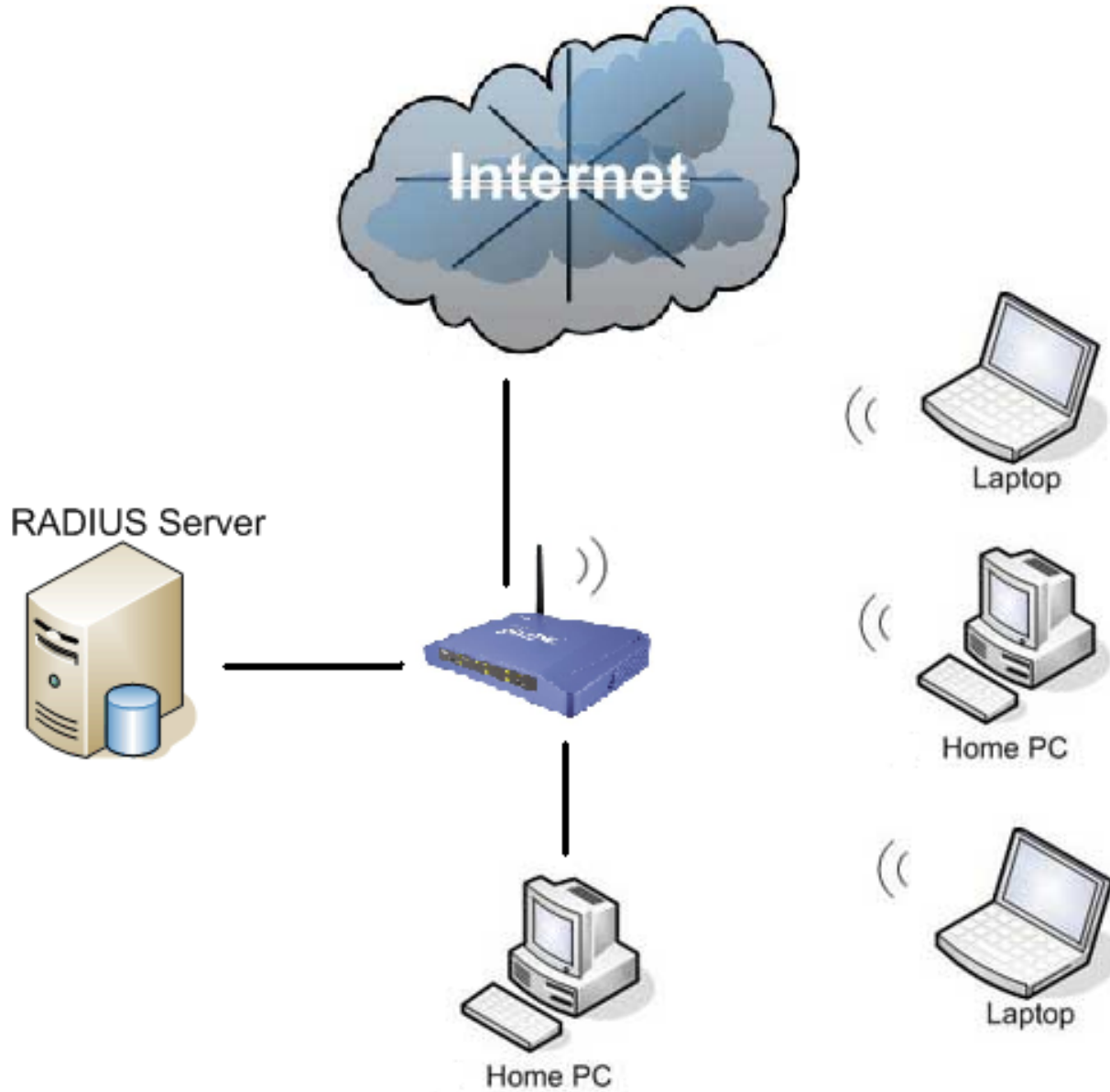


Schéma zapojení



TekRADIUS

TekRADIUS Manager (Admin Mode)

File Service Help

Users Groups Clients Settings Application Log Active Sessions Dictionary Editor Reporting

Browse Users

Search

Username	Group
2165551607	aaa
Administrator	sss
kaplan	sss
Wireless1	Default

User Administrator

Check and Reply Items for the user 'Administrator':

Attribute	Type	Value
User-Password	Check	1234
NAS-IP-Address	Check	192.168.1.1
Authentication-Method	Check	PEAP
TLS-Certificate	Check	USER

User : Administrator sss

Attribute : Check NAS-IP-Address 192.168.1.1

Add Modify Delete Add/Update Delete

User 'Administrator' selected... TekRADIUS Service is Running

Materiály

TekRADIUS, tekradius.com

Web semestrální úlohy

DSN wiki -> Y36SPS -> semestralky -> [benesd1](#)